



155 Wishaw Road

, Wishaw, ML2 8EN

Offers over £95,000

NEW TO THE MARKET!

A spacious upper apartment situated within Waterloo, Wishaw.

Comprising entrance hallway, large lounge, fitted kitchen, three bedrooms (the loft conversion being a large master) and shower room.

Further benefits include, double glazing, gas central heating and rear garden

Wishaw Road is situated central in Waterloo, and a short drive from Wishaw town centre with its many amenities and is ideally situated for commuting to Glasgow, Edinburgh and the central belt via both the M8 and M74 motorway networks.

EPCC

- Upper Cottage Apartment in Waterloo
- Three bedrooms - Master being a spacious Loft Conversion
- Bright Lounge
- Fitted Kitchen
- Rear Garden

Viewing

Please contact our Pomphreys Properties Ltd Office on 01698373365 if you wish to arrange a viewing appointment for this property or require further information.



3



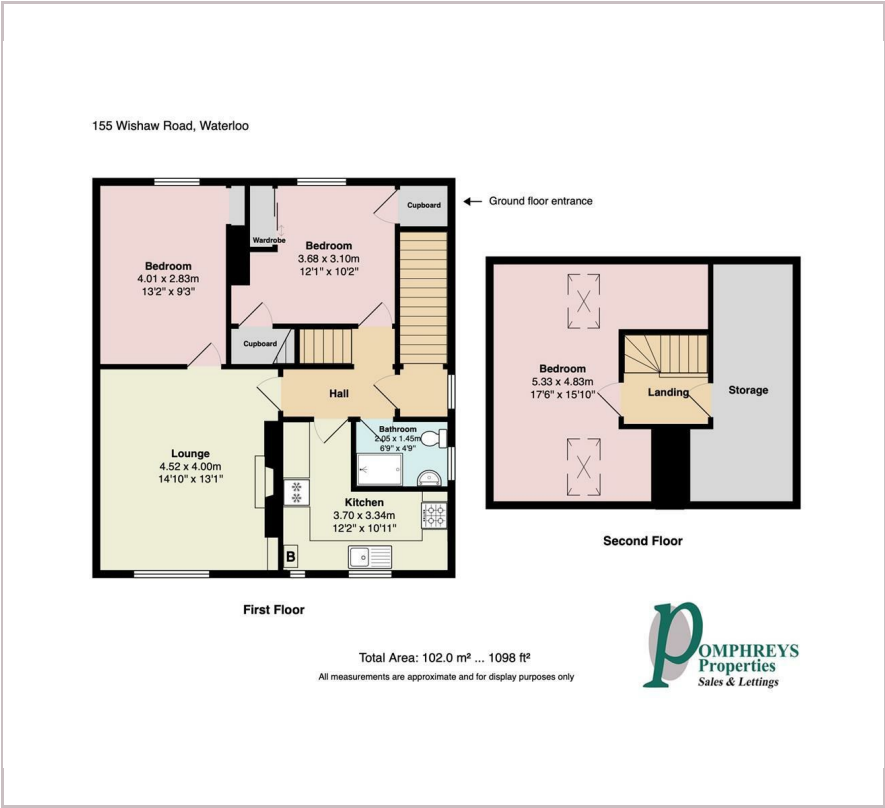
1



1



Floor Plan



Area Map



Energy Efficiency Graph



These particulars, whilst believed to be accurate are set out as a general outline only for guidance and do not constitute any part of an offer or contract. Intending purchasers should not rely on them as statements of representation of fact, but must satisfy themselves by inspection or otherwise as to their accuracy. No person in this firms employment has the authority to make or give any representation or warranty in respect of the property.